

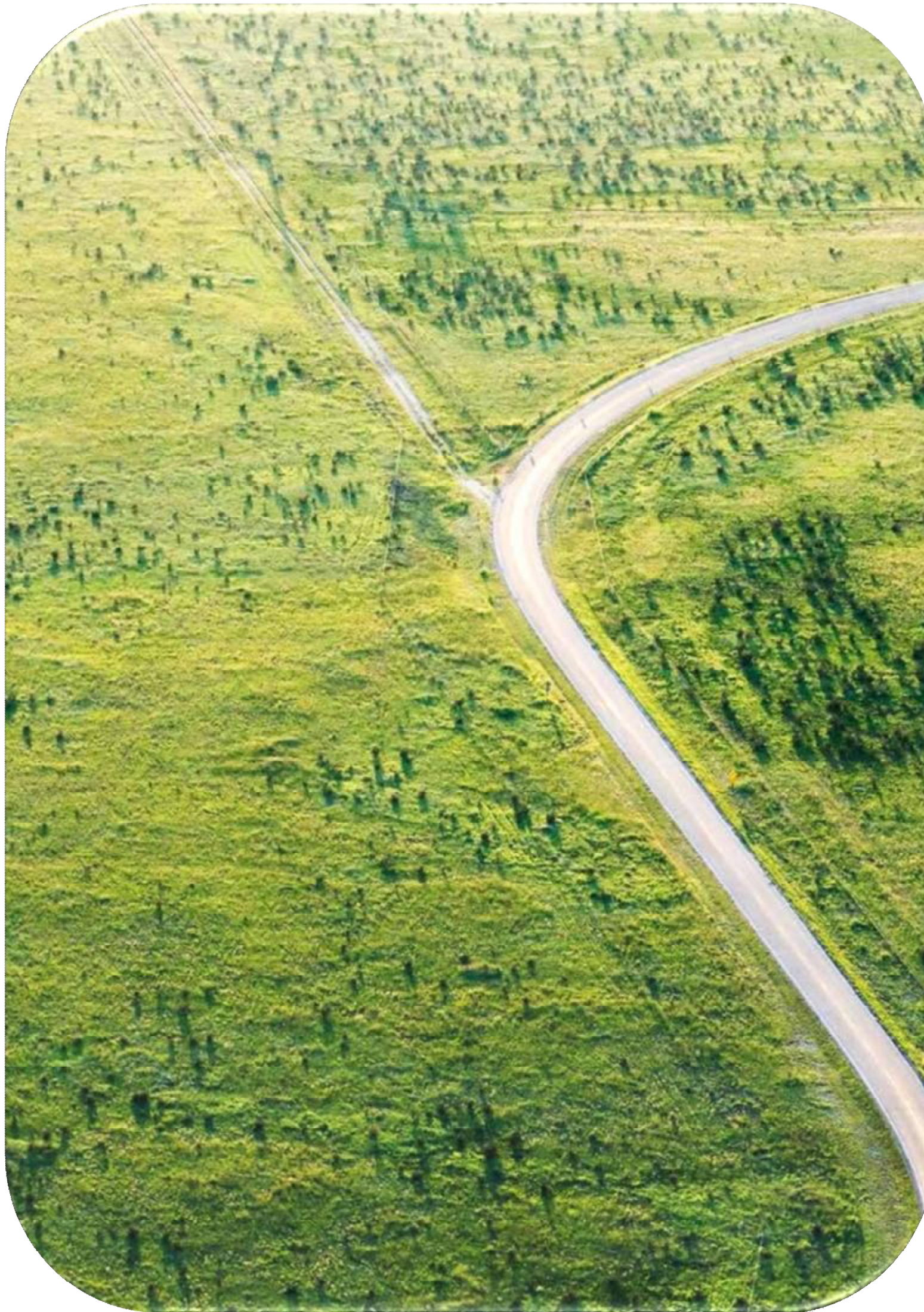


3CO-S0104G/3CO-S0104PG

OUTDOOR WATERPROOF 10/100/1000M INDUSTRIAL ETHERNET SWITCH /

OUTDOOR WATERPROOF POE INDUSTRIAL ETHERNET SWITCH

20240601-1160



Outdoor Waterproof Industrial Ethernet Switch

4* 10/100/1000M POE+ 1* 1000Base-FX SC/FC/ST interface IES

3CO-S0104G is a Fiber to Copper converter. Unlike many other media converters available on market, 3CO-S0104G has an outdoor waterproof design. They can use outdoor pole or outdoor. Inside industrial design can suffer -40 to 75C.

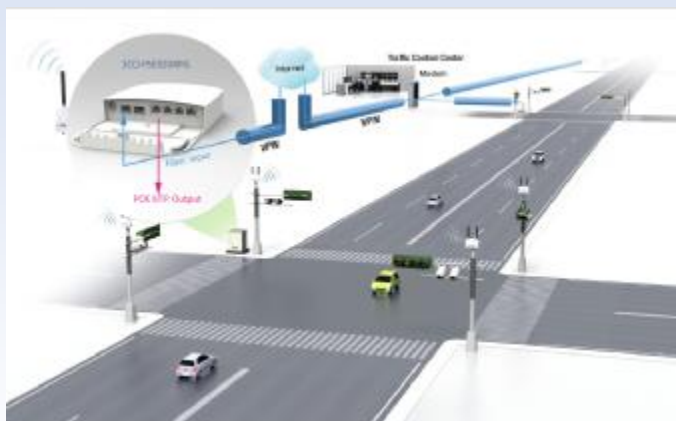
3CO-S0104PG is a Fiber to Copper converter. Unlike many other media converters available on market, 3CO-S0104PG has an outdoor waterproof design. The device supports 12-57V PoE with 802.3af/at support (with unshielded cross cable). Comes with PoE injector and power supply. The case has a mounting system that is secured by a screw from inside the lockable case, it's very easy use on the wall or on the pole.

Appearance

3CO-S0104G/ 3CO-S0104PG



Usage Scenario



Features

- ☆ Support 4 Gigabit electrical ports and 1 Gigabit optical port, the port supports auto-flip (Auto MDI/MDI-X)
- ☆ Support full-duplex and half-duplex auto-negotiation.
- ☆ All ports have full wire-speed forwarding capability to ensure non-blocking message forwarding.
- ☆ Complies with IEEE802.3/802.3u/802.3z/802.3x store-and-forward method.
- ☆ DC9~48V power supply
- ☆ Support -20 ~ 85 °C temperature range of full-load operation
- ☆ IP66 protection level, ABS + aluminium chassis cooling surface design, no fan, no cooling holes Passed the inspection report of Ministry of Public Security, CCC, FCC, CE, RoHS.
- ☆ Support PoE expansion, IEEE802.3af: maximum power 15.4W, IEEE802.3at: maximum power 30W.

Induction

3C-LINK 3CO-S0104G is a waterproof industrial switch, which realizes the conversion between the electrical and optical interfaces of Ethernet, and is configured with 4 10/100/1000M Ethernet electrical ports and 1 Gigabit optical port. It is used in underground comprehensive pipeline corridor, offshore drilling platform, high humidity and salt spray seashore, tunnel and other industrial sites. The optical port extends the Ethernet transmission distance from 100m on copper cable to 550m (multi-mode fiber) or 100km (single-mode fiber). The device adopts wall-mounted ABS + aluminums profile heat dissipation chassis, DC power input, IP66 protection level, -20 ~ +85 °C wide operating temperature, to ensure long-term stability, reliability and safe use in a variety of harsh environments (such as high temperature, low temperature, dust, electromagnetic interference, etc.). Suitable for road traffic control automation, rail transit, electric power automation, coal mine automation, wind energy, wind power, metallurgy and steel mills, oil and gas, building automation system, oil field control automation, hydropower station control automation, server room monitoring system, water monitoring, environmental monitoring, urban underground comprehensive pipeline corridor and other industrial control automation places and other industrial control needs of high performance, high reliability of the network environment.

Specification

PROTOCOL STANDARD

ETHERNET PROTOCOL	IEEE802.3 (Ethernet), IEEE802.3u (100Base-TX and 100Base-FX), IEEE802.3z (1000Base-TX and 1000Base-X), IEEE802.3x (Flow control)
------------------------------	--

CONNECTOR

GIGABIT FIBER PORT	Quantity: 1; Interface: fixed fiber port (default SC connector, single mode / multimode optional); Interface rate: 1000Base-X;
---------------------------	--

GIGABIT ETHERNET PORT

	Quantity: 4; Interface: RJ 45 ethernet port; Interface rate: 10 / 100 / 1000M adaptive port;
--	--

POWER INTERFACE

	Waterproof power interface
--	----------------------------

TRANSMISSION DISTANCE

TWISTED-PAIR	100m (standard CAT 5 / CAT 5 e cable)
FIBRE-OPTICAL	Multi-mode fiber: 550m;

single-mode fiber: 20 / 40 / 60 / 80 / 100km;

SWITCHING CHARACTERISTICS

TRANSMISSION MODE Storage and forwarding (full-line speed)

BACKBOARD BANDWIDTH 10Gbps

PACKAGE FORWARDING RATE 37.4Mpps

MAC ADDRESS LIST 4K, automatic learning

POWER FEATURES

INPUT VOLTAGE DC9 ~ 48V

FULL OF POWER CONSUMPTION < 5W

WIRING METHOD Waterproof power interface

OVERLOAD PROTECTION Support

ANTI-CONNECTION PROTECTION Support

SUPPORTING POWER SUPPLY No, the adapter should be purchased separately

WORK ENVIRONMENT

WORKING TEMPERATURE -20 ~ 85°C

STORAGE TEMPERATURE -40 ~ 85°C

RELATIVE HUMIDITY 5%~95% (no condensation)

MECHANICAL PROPERTIES

SHELLCASE ABS + aluminum alloy radiator case (fanless design)

LEVELS OF PROTECTION IP66

WAY TO INSTALL wall-mount type

SIZE L * W * H: 195*110 75(mm)

WEIGHT 455g

INDUSTRY STANDARD

EMI FCC CFR47 Part 15, EN55022/CISPR22, Class A

EMS EN61000-4-2 (ESD), Level 4
EN61000-4-3 (RS), Level 3
EN61000-4-4 (EFT), Level 4
EN61000-4-5 (Surge), Level 4
EN61000-4-6 (CS), Level 3
EN61000-4-8, Level 5

UNDER ATTACK GB/T2423.5-1995

FREE-FALL GB/T2423.5-1995

STRONGLY AFFECT GB/T21563-2008/IEC61373: 1999

PRODUCT CERTIFICATION AND QUALITY ASSURANCE

PRODUCT CE; FCC; ROHS

CERTIFICATION ISO9001; ISO45001; ISO14001

WARRANTY 3 years, lifetime maintenance;

Order Information

MODEL NO	SPEC
3CO-S0104G-S20	10/100/1000M TX to 4 , SC SX 20KM, -40 to 75C, Water-Proof. DC12-57V
3CO-S0104PG-S20	10/100/1000M TX to 4 4 , SC SX 20KM,, -40 to 75C, Water-Proof. DC12-57V, 802.3af/at
3CO-S0104G-S40	10/100/1000M TX to 4 , SC SX 40KM, -40 to 75C, Water-Proof. DC12-57V
3CO-S0104PG-S40	10/100/1000M TX to 4 4 , SC SX 40KM,, -40 to 75C, Water-Proof. DC12-57V, 802.3af/at