

MPO/MTP Patch Cord

MPO/MTP Trunk Patch Cord

MPO assemblies are becoming increasingly popular due to the high density applications in the marketplace.

3c-Link MPO assemblies are offered in different cable styles for various space requirements. 3c-link MPO connectors meet TIA/EIA 604-5 and IEC 61754-7 industry standards. MPO assemblies are wired to Method B connection per TIA 568-C.3 and are RoHS compliant. Other wiring configurations available. Please contact 3c-link for assistance with configuring the required cable assembly for your specific needs.



Om4 MPO /MTP Cable



Om3 MPO /MTP Cable



SM MPO /MTP Cable



Multi-fiber Push On

Known for compact design and simple insertion and removal, it's easier to install, just pull 1 cable 12 fibers for one easy plug-in.

0.35dB Ultra Low IL + Famous Connector

Max 0.35dB, a typical lower than 0.15dB on SM Low Loss Ferruler and the MTP connector assembly is made by famous company

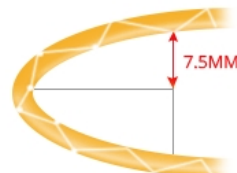


The Perfect Corning Fiber

Exclusive use of Corning optical fibers that designed to pass ISO/IEC, ITU-T, GB/T, YD/T, RoHS and other industry standards

7.5mm Minimum Bend Diameter

Conformed to National Electrical Code that can be withstood tight bends and challenged cabling routes with substantially less signal loss.



Applications

- CATV
- Telecommunication
- Lan Networks
- WAN Networks
- Metro Networks
- Data Networks
- ISP

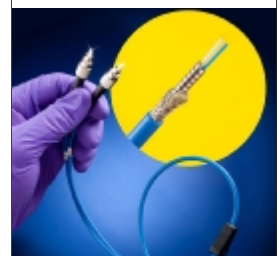
Features

- Low Insertion loss
- Low Return loss
- High Reliability
- Compact Design
- High Precision
- High Stability

Note:

1. We can offer different LGX Chassis for MTP/MPO Module
2. Custom configurations available upto request.

MTP/MPO Connector



MPO/MTP Patch Cord

MPO/MTP Trunk Patch Cord

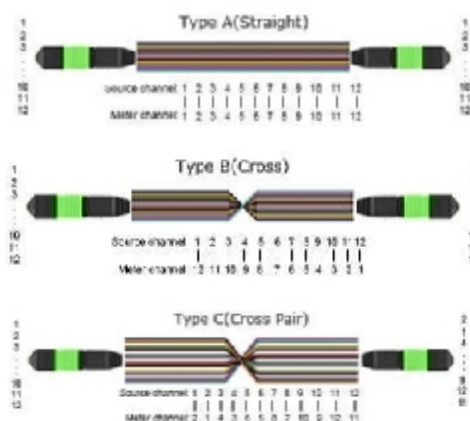


Optical Performance

Parameter	Single Mode	Multi-Mode
Elite Insertion Loss	< 0.35dB	< 0.35dB
Return Loss	>50 dB	N/A
Standard Insertion Loss	< 0.75dB	< 0.60dB
Work Temperature	-40 to 85 degrees	-40 to 85 degrees
Repeatability	< 0.20dB	< 0.20dB
Interchangeability	< 0.20dB	< 0.20dB
Impact	1.5m drop 8 cycles<0.2dB	1.5m drop 8 cycles<0.2dB

The three polarity methods
Type A, Type B and Type C
are used to guarantee the
right bi-directional allocation

TypeA: Straight Through
TypeB: Cross
TypeC: Cross Pair



Order Information:

3C-MPO-M-MPO-M-12-A-S1-0.9-10-PVC

① ② ③ ④ ⑤ ⑥ ⑦ ⑧ ⑨ ⑩

Item	Unit	Parameter
1. Connector	-	MPO , MTP
2. M/F	-	M= Male F: Female Connector
3. Connector	-	MPO , MTP
4. M/F	-	M= Male F: Female Connector
5. Fiber Cores	-	8/12/24= 8/12/24 Cores
6. Ferrule End	-	P=PC, A=APC
7. Fiber Type	-	S1/S2=OS1/OS2 M1/2/3/4=OM1,2,3,4
8. Cable Dia	(mm)	0.9/1.6/2/3/4
9. Cable Length	(m)	L=1,2,3,...10....100
4. Cable	-	N/A=LSZH, PVC/OFNP/OFNR



Applications

- CATV
- Telecommunication
- Lan Networks
- WAN Networks
- Metro Networks
- Data Networks
- ISP

Features

- Low Insertion
- Low Return loss
- High Reliability
- Compact Design
- High Precision
- High Stability



MPO Connector



3c-link MPO /MTP fanout cable is MPO+ to 8/16/24 x LC/sc passive fiber cables are designed for 40Gb/s to 10Gb/s cable assemblies connections. Connecting this optical cable to Mellanox QSFP and SFP+ modules provides connectivity between devices using a QSFP+ port on one end and multiple SFP+ ports on the other end. The cables use state-of-the-art signal processing technology to fill the expanding need for cost-effective data center interconnects. Through long range connections, MPO+ to 8x LC cables provides 40GbE systems the ability to connect to 10GbE switches or adapter cards.



Om4 MPO /MTP Fanout Cable



Om3 MPO /MTP Fanout Cable

0.2 dB Low Insertion Loss LC Connector

The tightly tolerance ceramic ferrules ensuring consistent low loss



The Perfect Corning Fiber

Exclusive use of Corning optical fibers that designed to pass ISO/IEC, ITU-T, GB/T, YD/T, RoHS and other industry standards



Applications

- CATV
- Telecommunication
- Lan Networks
- WAN Networks
- Metro Networks
- Data Networks
- ISP

Features

- Low Insertion loss
- Low Return loss
- High Reliability
- Compact Design
- High Precision
- High Stability

Note:

1. We can offer different LGX Chassis for MTP/MPO Module
2. Custom configurations available upto request.

LC Duplex Connector





Optical Performance

Parameter	Single Mode	Multi-Mode
Elite Insertion Loss	< 0.35dB	< 0.35dB
Return Loss	>50 dB	N/A
Standard Insertion Loss	< 0.75dB	< 0.60dB
Work Temperature	-40 to 85 degrees	-40 to 85 degrees
Repeatability	< 0.20dB	< 0.20dB
Interchangeability	< 0.20dB	< 0.20dB
Impact	1.5m drop 8 cycles<0.2dB	1.5m drop 8 cycles<0.2dB

Applications

- * Telecommunication Networks
- * Data Communication Networks
- * Optical System Access Networks
- * Broadband / CATV Networks
- * Equipment / Switch Interconnections

Superior Quality and Performance

- * Every connector termination we make is 100% tested prior to shipping to confirm that it meets our highest performance standards.
- * Four wavelength testing ensures that your jumpers will support the demanding requirements for 10G/40G/100G transmission and next generation PON deployment.

Order Information:

3C- MPO- A- LC- A- 12- M- S1- 2- 10- F2- F1- PVC
① ② ③ ④ ⑤ ⑥ ⑦ ⑧ ⑨ ⑩ ⑪ ⑫

Item	Unit	Parameter
1. Connector	-	MPO , MTP
2. Ferrule End	-	P=PC, A=APC
3. Connector	-	LC/SC/FC/ST
4. Ferrule End	-	P=PC, U=UPC, A=APC
5. Fiber Cores	-	8/12/24= 8/12/24 Cores
4. M/F	-	M= Male F: Female Connector
7. Fiber Type	-	S1/S2=OS1/OS2 M1/2/3/4=OM1,2,3,4
8. Cable Dia	(mm)	0.9/1.6/2/3/4(MPO)
9. Cable Length	(m)	L=1,2,3,... 10.... 100(Total Length)
A. Cable Dia	(mm)	F+0.9/1.6/2/3/4(Fanout)
B. Cable Length	(m)	F+L=1,2,3,... 10(Fanout Length)
0. Cable	-	N/A=LSZH, PVC/OFNP/OFNR



LC



SC

Applications

- ▣ CATV
- ▣ Telecommunication
- ▣ Lan Networks
- ▣ WAN Networks
- ▣ Metro Networks
- ▣ Data Networks
- ▣ ISP

Features

- ▣ Low Insertion loss
- ▣ Low Return loss
- ▣ High Reliability
- ▣ Compact Design
- ▣ High Precision
- ▣ High Stability

Note:

1. We can offer different LGX Chassis for MTP/MPO Module
2. Custom configurations available upto request.

MTP/MPO Module



MPO/MTP Chassis

MPO/MTP LGX Module



- * 2 MPO connectors in
24 LC connectors out
(2pcs 12cores LC to MPO)
- * Box Size: 118.5x64.5x33.2mm

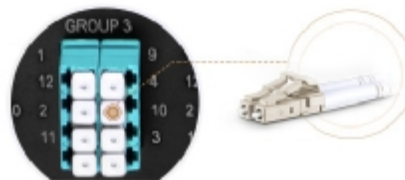


- * 3 MPO connectors in
24 LC connectors out
(3pcs 8 cores LC to MPO)
- * Box Size: 118.5x64.5x33.2mm

- * 1U Chassis loaded with 5pcs MPO Boxes (MPOBOX01-2)
- * Total 120 Core, 10 MPO connectors in, 120 LC connectors out
- * 483mm×335mm×44.4mm



- * Instant and Hassle-Free Connection
- * No dead LC ports to full usage, high-density integrating with 10G equipment



- * MTP/MTP Adapter with Opposed Key
- * No separate MTP/MPO connection in the rear, combining MTP/MPO Female cables to 40G port



- * Ultraslimline 1U Rack Space-Up to 96 Fibers
- * Formed with 12 MTP/MPO-LC Elite cables for high speed in network infrastructure
- * Pre-assembled, modular to reduce clutter and slack for breakout cables
- * Breakout functionality to standard cables, simplifying installation

Applications

- ▣ CATV
- ▣ Telecommunication
- ▣ Lan Networks
- ▣ WAN Networks
- ▣ Metro Networks
- ▣ Data Networks
- ▣ ISP

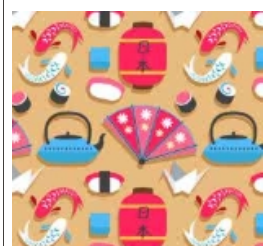
Features

- ▣ Low Insertion loss
- ▣ Low Return loss
- ▣ High Reliability
- ▣ Compact Design
- ▣ High Precision
- ▣ High Stability

Note:

1. We can offer different LGX Chassis for MTP/MPO Module
2. Custom configurations available upto request.

MTP/MPO Module



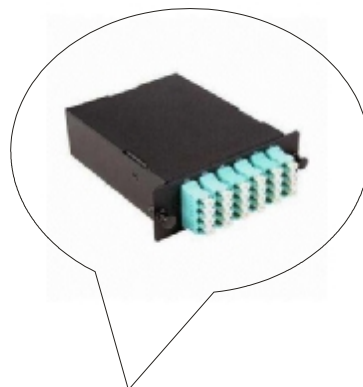
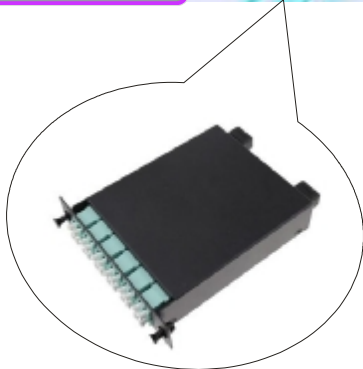
MPO/MTP Chassis

Common Type

This rackmounted patch panel is designed to manage and house easy-plug MTP / MPO to LC fiber cassette modules, for connecting plug-and-play pre-terminated high density MTP / MPO Fiber cabling system. This solution contributes to greater network availability that especially suitable for SAN, LAN and Data Center applications. Each easy-plug MTP / MPO to LC cassette is accommodated with a 12/24-fiber MTP / MPO based fiber assemblies, and pre-loaded with LC adapters in different fiber modes for your choices

19inch 1U Chassis
Support 3 LGX Module
Each LGX module support
- 1 MPO/MTP to 24 LC
- 2 MPO /MTP to 12LC
- 2 MPO /MTP to 8LC
- 1 MPO/MTP to 12 SC

3C-MPO-1U-LGX3



19inch 1U Chassis
Support 4 LGX Module
Each LGX module support
- 1 MPO/MTP to 24 LC
- 2 MPO /MTP to 12LC
- 2 MPO /MTP to 8LC
- 1 MPO/MTP to 12 SC

3C-MPO-1U-LGX4

Remark: 3C-MPO-1U-LGX4 also can a 1U 48 Cores Patch Panel

* when as Patch panel application, inside with splice tray.

* when as MPO application no splice tray .

Applications

- * Telecommunication Networks
- * Data Communication Networks
- * Optical System Access Networks
- * Broadband / CATV Networks
- * Equipment / Switch Interconnections

Applications

- ▣ CATV
- ▣ Telecommunication
- ▣ Lan Networks
- ▣ WAN Networks
- ▣ Metro Networks
- ▣ Data Networks
- ▣ ISP

Features

- ▣ Low Insertion loss
- ▣ Low Return loss
- ▣ High Reliability
- ▣ Compact Design
- ▣ High Precision
- ▣ High Stability

Note:

1. We can offer different LGX Chassis for MTP/MPO Module

2. Custom configurations available upto request.

MTP/MPO Module



MPO/MTP Cable

40G/100G Conversion Cables



Om4 MPO /MTP Cable



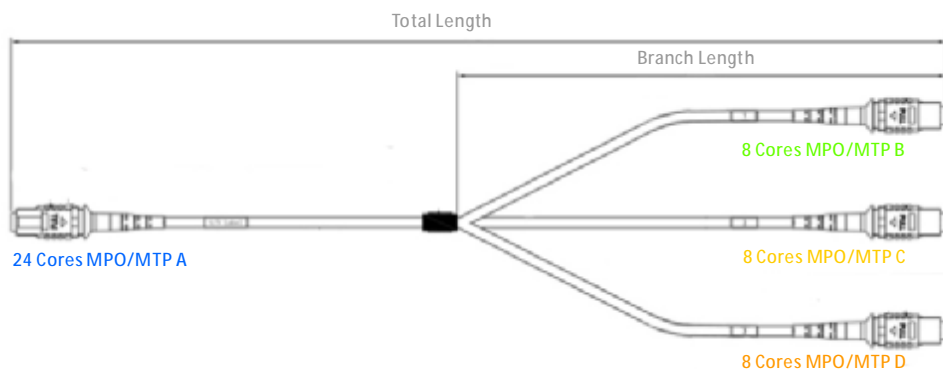
Om3 MPO /MTP Cable



SM MPO /MTP Cable

One 24 Cores MTP/MPO to 8 cores MTP/MPO normally application is convert 100G to 3* 40G.

Connecting this optical cable to 3c-link 100G CFP /CXP and QSFP modules provides connectivity between devices using a CFP/CXP port on one end and multiple QSFP ports on the other end. The cables use state-of-the-art signal processing technology to fill the expanding need for cost-effective data center interconnects.



Drawing Details:

1. Fiber Strand: 24-Fiber, 8-Fiber

3. Structures: 24 Fiber, 8 fiber; Aramid yarn; LSZH jacket.

Fiber Laying: 1A-9B...4A-12B; 5A-9C...8A-12C; 9A-9D...12A-12D

2. MTP Connector: Key Up to Key Down

4. Registered trademark of US Conec, and popular in EU and US.

13A-1B...16A-4B; 17A-1C...20A-4C; 21A-1D...24A-4D

Applications

- CATV
- Telecommunication
- Lan Networks
- WAN Networks
- Metro Networks
- Data Networks
- ISP

Features

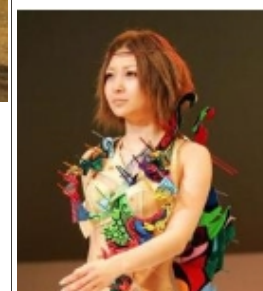
- Low Insertion loss
- Low Return loss
- High Reliability
- Compact Design
- High Precision
- High Stability

Note:

1. We can offer different LGX Chassis for MTP/MPO Module

2. Custom configurations available upto request.

MTP to MTP Cable



3c-link manufacturers a wide variety of singlemode and multimode optical fiber jumpers for telecomm and data center applications. Our state of the art manufacturing process is recognized by leading global service providers as one of the best in the industry. We attribute our success to the highly dedicated and skilled production team which starts by selecting only the highest quality fiber and connector components. Each of our valued technicians is expertly trained in assembling and polishing connectors to near perfection. With a relentless commitment to quality, we offer only products meeting and exceeding unsurpassed optical performance. Remarkably, we do this while maintaining a highly efficient production operation which ensures you get these highest quality jumpers in a timely fashion at highly competitive, market prices.

MPO/MTP Cable

Water Proof MPO/MTP Cable

Waterproof fiber optic patch cables are designed to fit for outdoor applications. The strong PU jacket and armored structure can resist high temperature and suit to use in harsh environment. The cable can provide 1 gigabit data transfer speeds in high bandwidth application and up to 5 times faster than standard 9/125um fiber patch cable. What's more, it's IP67 MPO cable connectors have an extremely rugged, protective rubber coating with integral anti-kink strain-relief boot and a rubber-coated, metal, latching cap, attached by a steel lanyard. When mated or capped, the connection is environmentally sealed up to IP65. It is ideal for using in a variety of applications, including fiber to the antenna (FTTA) and fiber to the home (FTTH).



Water Proof MPO Fanout



Water Proof MPO Cable

Applications

- CATV
- Telecommunication
- Lan Networks
- WAN Networks
- Metro Networks
- Data Networks
- ISP

Features

- Low Insertion loss
- Low Return loss
- High Reliability
- Compact Design
- High Precision
- High Stability

Note:

1. We can offer different LGX Chassis for MTP/MPO Module
2. Custom configurations available upto request.

MPO/MTP Cable

Armored MPO/MTP Cable



Color												
No. of fiber	1	2	3	4	5	6	7	8	9	10	11	12



3C-LINK offer Armored OM3/OM4/SM MPO 12 core fiber patch cord with MPO-MPO OM3/OM4/ G.657A1 armored Aqua patch cord is OFNP Plenum rated, it has 3.5mm stainless steel tube inside out jacket. This steel Armored MPO/MTP Fiber Optic cable is specifically designed for heavy-duty indoor/outdoor, tactical or military applications. Its rugged shell with stainless steel tube, Kevlar & water block yarn, it is 100 times stronger than regular Fiber Optic Cable, yet highly flexible.

LOOP MPO/MTP

